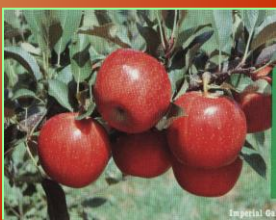


ש
כ
ש
נ
כ
ש
ש



Costadri CROCCANTE





VARIEDADES PRINCIPALES.

Fuji - Granny Smith - Red Delicious - Royal Gala - Rome Beauty - Gala - Red Chief - Braeburn.

CALENDARIO DE OFERTA:

	ENE	FEB	MAR	ABR	MAY	JUN	JUL	AGO	SET	OCT	NOV	DIC
MANZANA												

MUCHA OFERTA

POCA OFERTA



Zonas productoras:

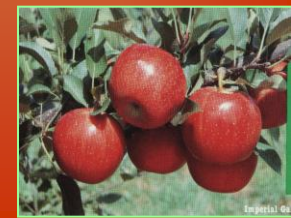
ALTO VALLE DE RIO NEGRO Y NEUQUEN	90%
MENDOZA	10%

USOS:

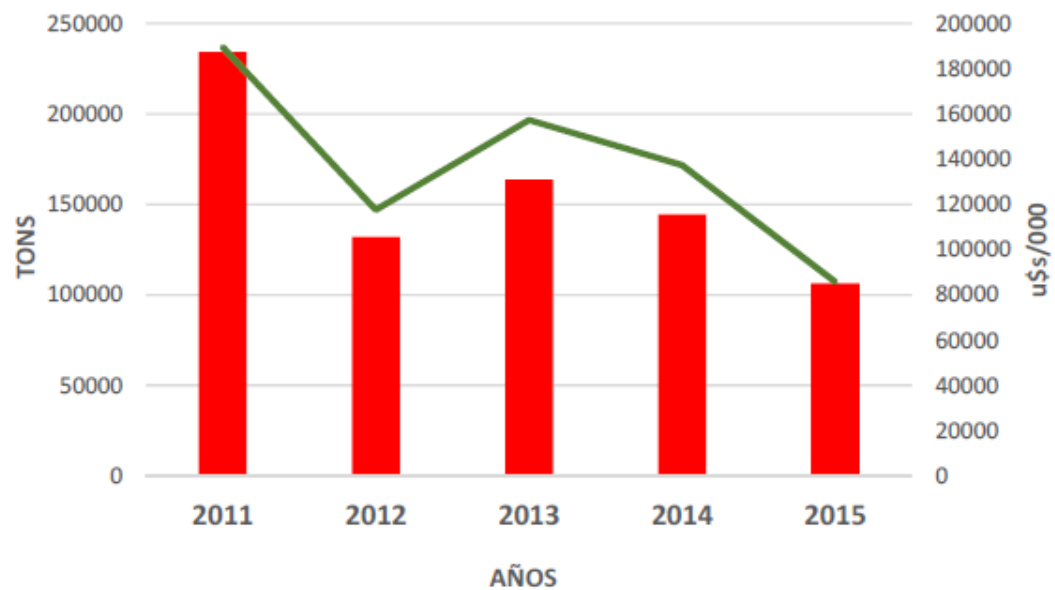
INDUSTRIA: 42 %

CONSUMO INTERNO: 41 %

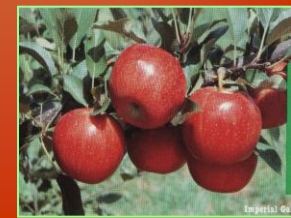
EXPORTACION EN FRESCO: 17 %



EVOLUCION DE LAS EXPORTACIONES ARGENTINA DE MANZANA PERIODO 2011-2015.



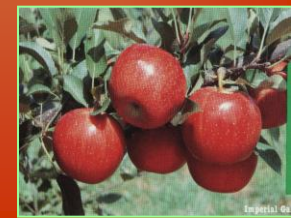
Fuente: DMA S/d INDEC



SUPERFICIE CULTIVADA CON MANZANA OASIS SUR

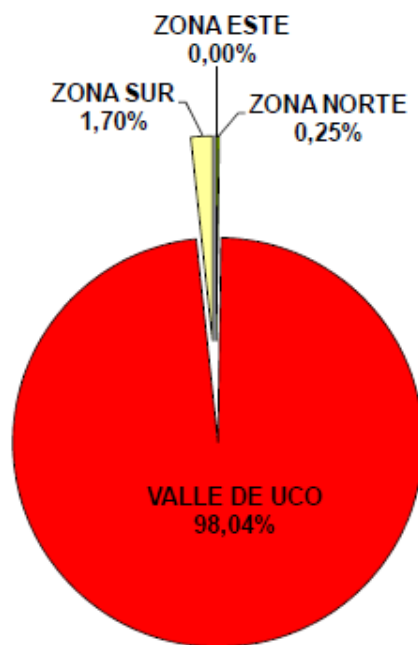
- SAN RAFAEL: 88 Ha
- GENERAL ALVEAR: 33 Ha
- Total Sur: 121 Ha

Fuente: RUT 2014



Manzana

Producción

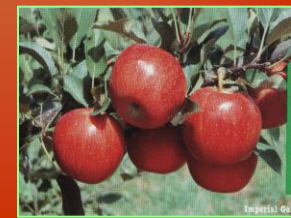


53.167 tn

Diferencia 14/15
-40%

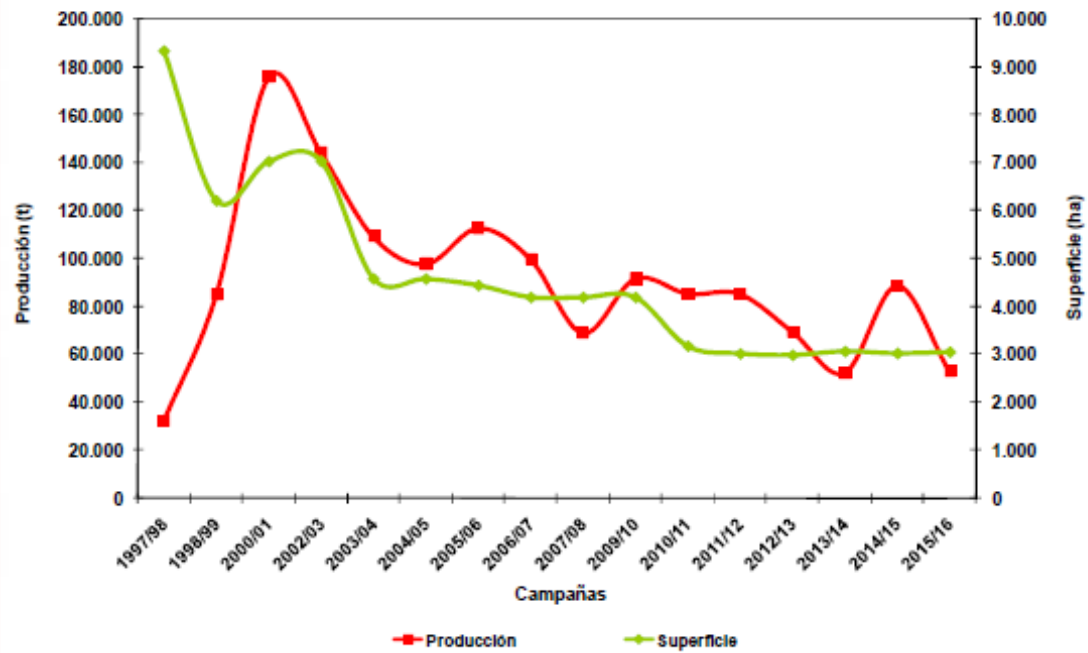
Diferencia 13/14
1%

FUNDACION
IDR
INSTITUTO
DE DESARROLLO RURAL



Manzana

Producción



Producción mundial (variedades)

MANZANAS Producción mundial

Variedades que comparten en el mercado (%)

Variedades	2005	1997	92/93
Red Delicious	17,30	18,80	20,50
Golden Delicious	12,80	14,80	17,80
Fuji	11,90	10,90	4,50
Granny Smith	3,30	4,00	5,20
Gala	2,80	2,30	1,40
Idared	1,90	2,00	2,00
Jonagold	1,90	1,60	2,80
Jonathan	1,70	1,80	2,70
McIntosh	1,30	1,60	2,10
Morgenduft	1,20	1,40	2,10
Braeburn	0,80	0,70	0,30
Elstar	0,80	0,70	1,10

Fuente: World Apple Review 1997, The World Apple Report

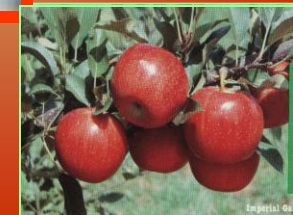
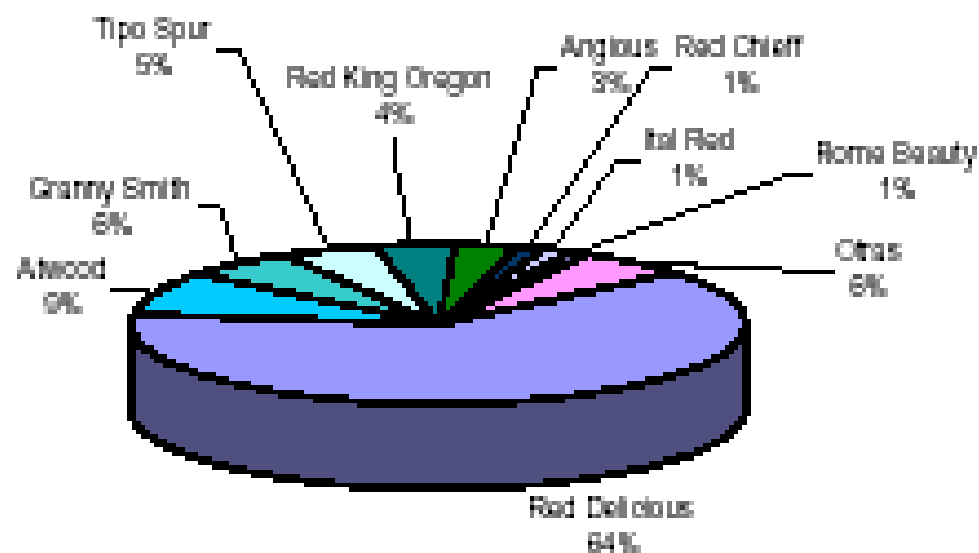


Figura 3

Participación relativa de las variedades de manzano en la superficie implantada. Año 1996



Fuente: IDR en base a datos de Estadísticas Fruícolas 1996.

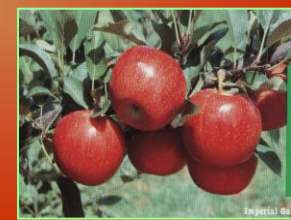
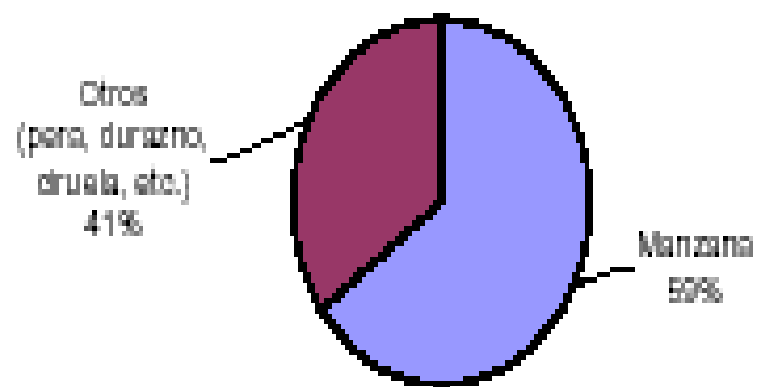
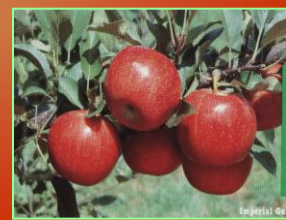


Figura 8

Porcentaje de manzana y otros productos procesados.



Fuente: IDR. Caracterización de la Cadena Agroalimentaria de Manzana de Mendoza. 1999.



Variedades



Gala



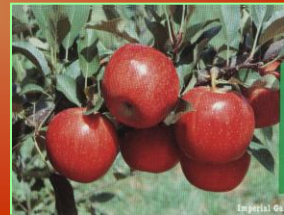
15 de febrero



Imperial gala



15 de febrero

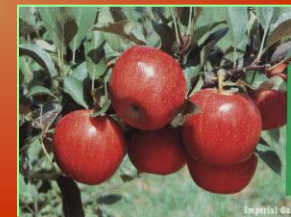


the best tasting and
scarlet finish is over an
is conical, with good
the tree is "grower



Scarlet gala

15 de febrero



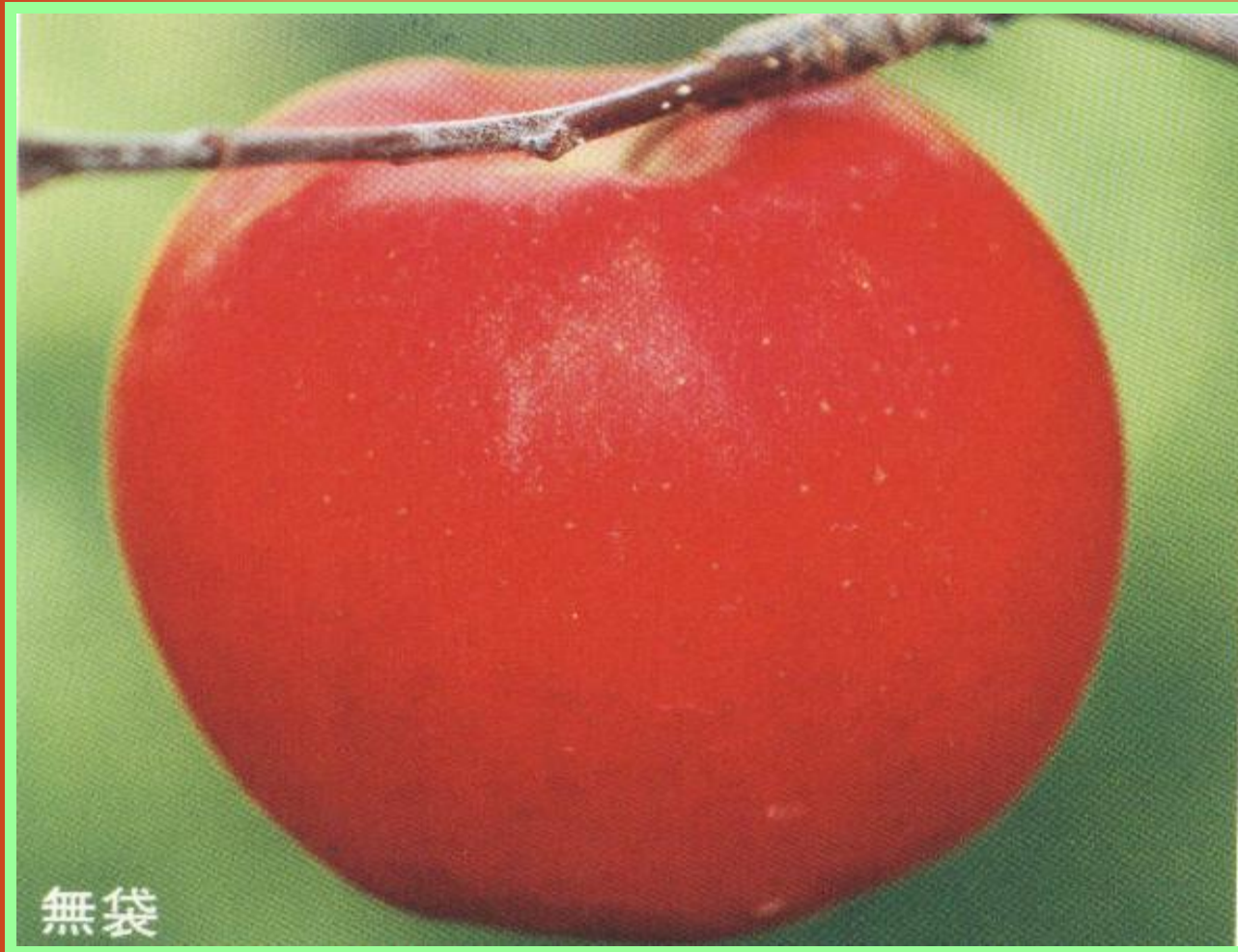
Royal gala



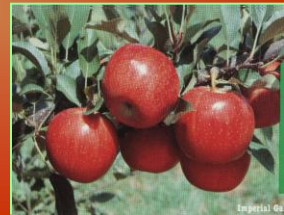
15 de febrero



New jonagold



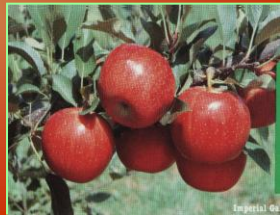
10 de marzo



Red jonagold



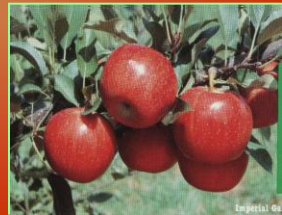
10 de marzo



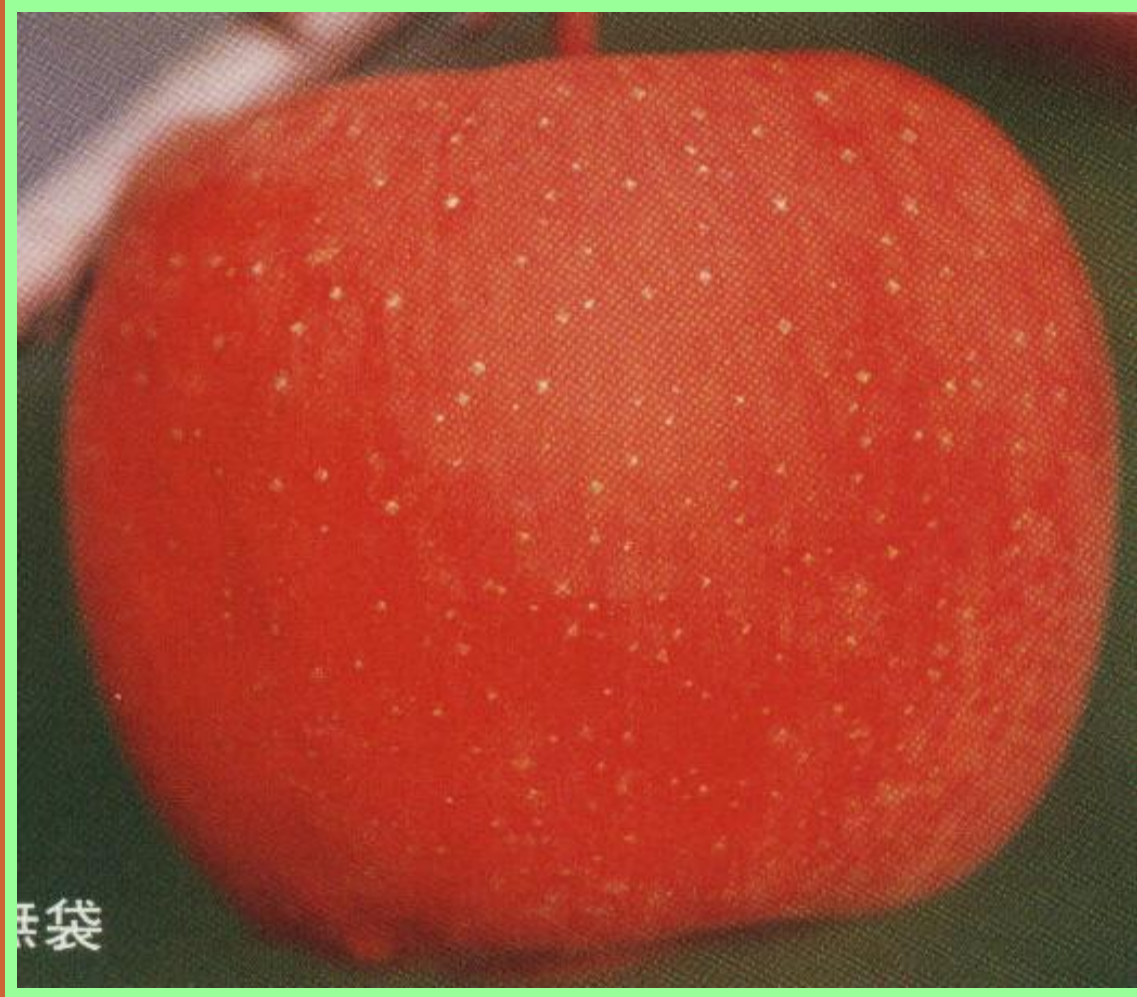
Golden



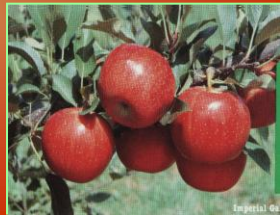
10 de marzo



Fuji



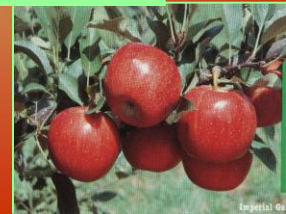
10 de abril



Granny Smith



10 de abril





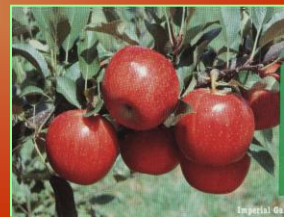
Pink lady



10 de abril



Prime red



Variedades



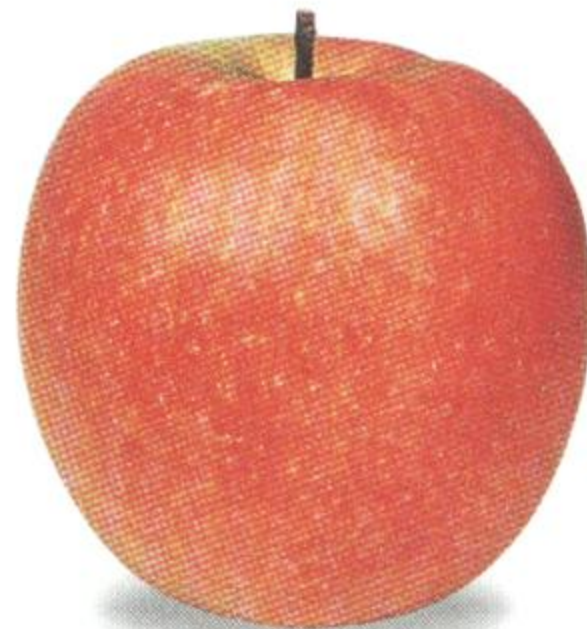
GALAXY®

clone Ci C.A.V.



BRAEBURN HILLWELL®

Hidala**



PINK LADY®

Cripps Pink (cov)



VARIEDADES DE MANZANA



Red Delicious



Criterion



Royal Gala



Pink Lady



Golden Delicious



Elstar



Granny Smith



Yellow Newtown Pippin



Fuji



Jonagold



Rome Beauty

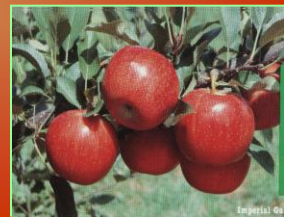


Cameo



Braeburn

Variedades



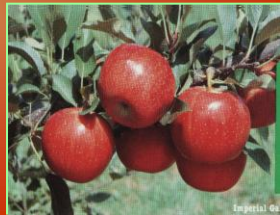
Enfermedades



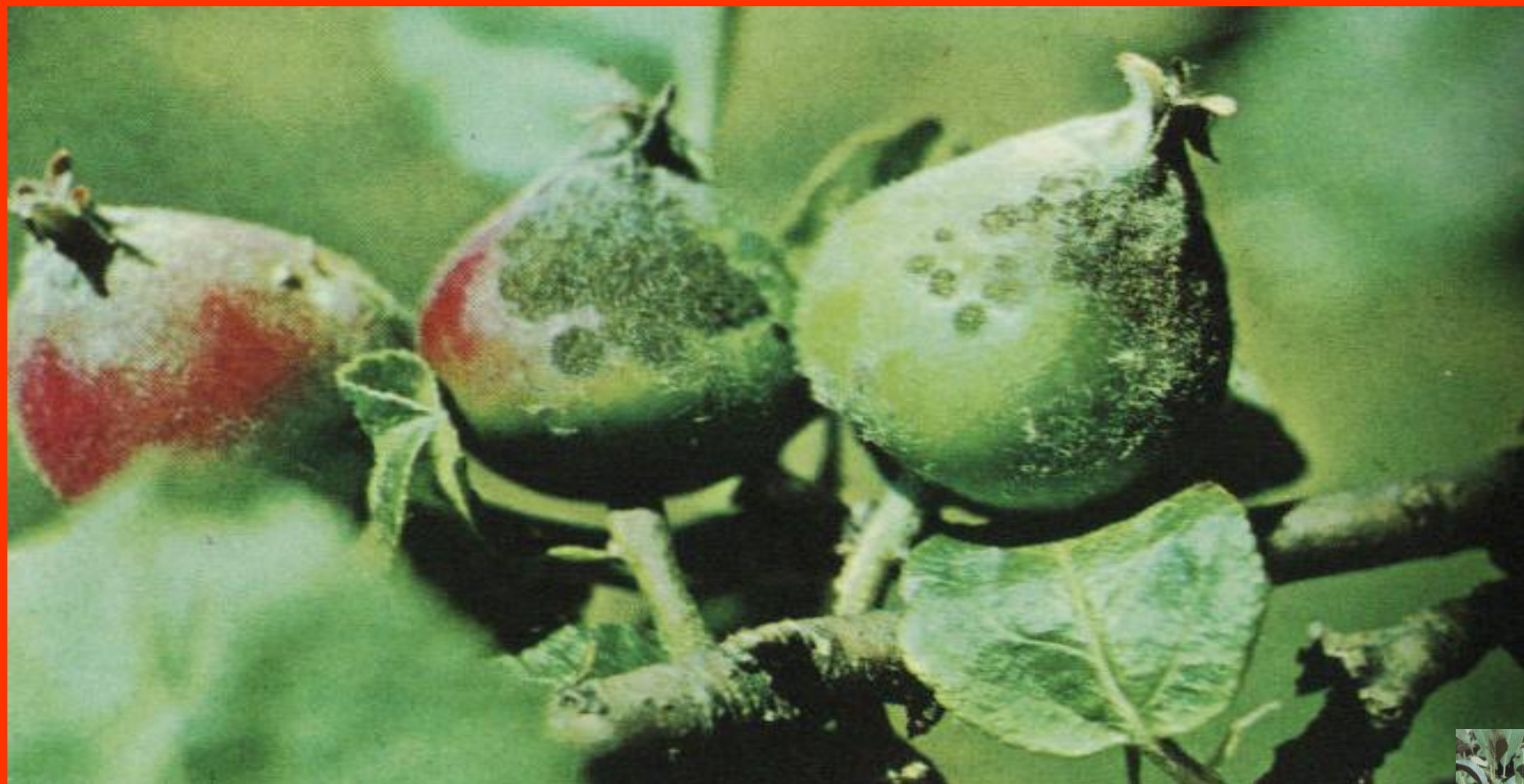
Alternaria

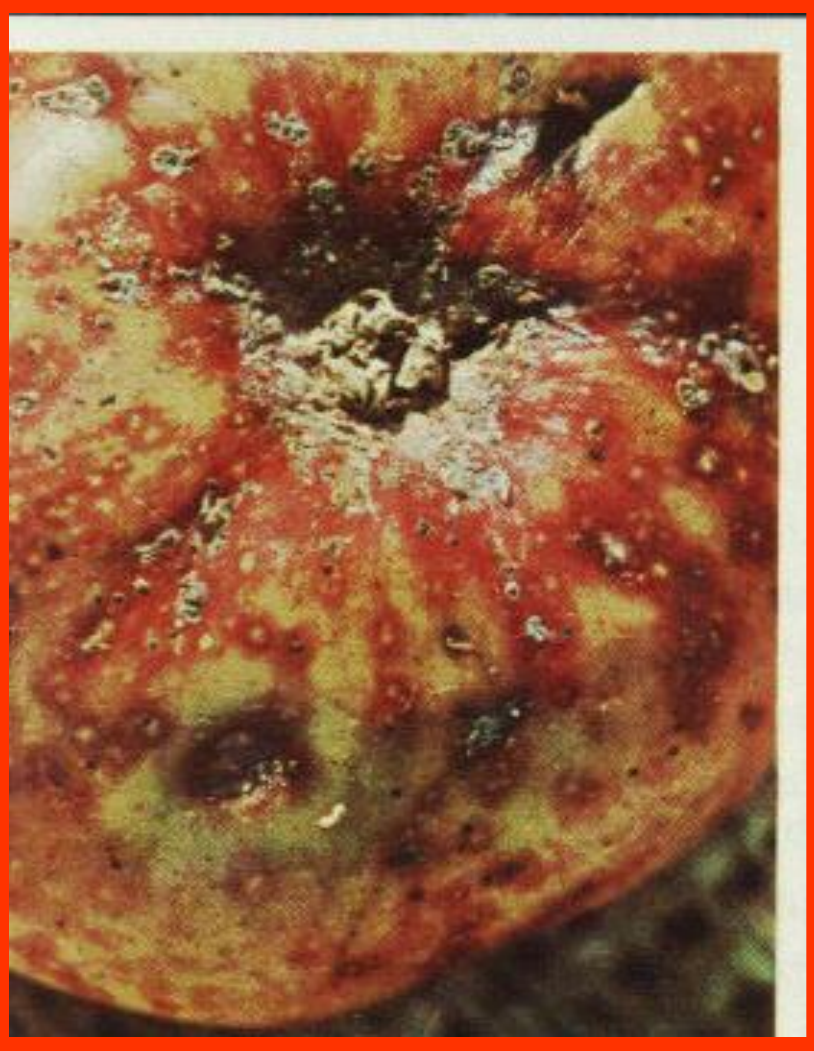


90. Alternaria rot in wounds on Delicious apples.
(Courtesy A. L. Jones)

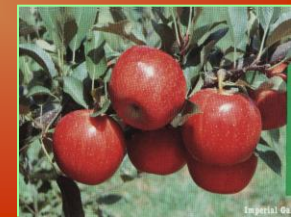


Moteado en manzanas jóvenes





Manzana atacada
por piojo de San José



Fin

